

Viola

Sonata, mvt. ii

arranged for viola and string orchestra

Dimitri Shostakovich, Op. 147

arr. Alice Kanack

♩ = 100

First staff of music, measures 1-7. Key signature: one flat (B-flat). Time signature: 2/4. The music consists of a steady eighth-note pattern.

*p*

Second staff of music, measures 8-16. Measures 8-15 continue the eighth-note pattern. Measure 16 contains a whole rest with a '2' above it, indicating a second ending. Measure 17 begins the next staff.

Third staff of music, measures 17-23. Measure 17 continues the eighth-note pattern. Measure 18 has a 'sim.' (sustained) marking above it. Measures 19-23 feature a melodic line with a 'mf' (mezzo-forte) dynamic marking below it.

Fourth staff of music, measures 24-30. The eighth-note pattern continues through measure 30. The staff ends with a 5/8 time signature change.

Fifth staff of music, measures 31-37. The eighth-note pattern continues through measure 37. The staff starts with a 5/8 time signature and changes to 2/4 in measure 32.

Sixth staff of music, measures 38-44. The eighth-note pattern continues through measure 44. A '*p*' (piano) dynamic marking is placed below the staff in measure 38.

Seventh staff of music, measures 45-51. The eighth-note pattern continues through measure 51. The staff features several time signature changes: 5/8, 2/4, and 5/8.

Eighth staff of music, measures 52-59. The music becomes more melodic. A 'cresc.' (crescendo) marking is placed above the staff in measure 52. Accents (>) are placed over notes in measures 58 and 59.

Ninth staff of music, measures 60-66. The music continues with melodic lines and accents (>) over notes in measures 60, 61, 62, 63, and 64.

69 *cresc.* *ff* *p*

76 *f* 3

88

96 6 *f*

111 2 *ff* *dim.* *p* 5

129 7 13 *pp* poco pesante 2 6

164 4 8 2 pesante 2

187 7 2 3 10 2 7

222 *mf* *f*

232 *mf* 8 *p*

248



255



265



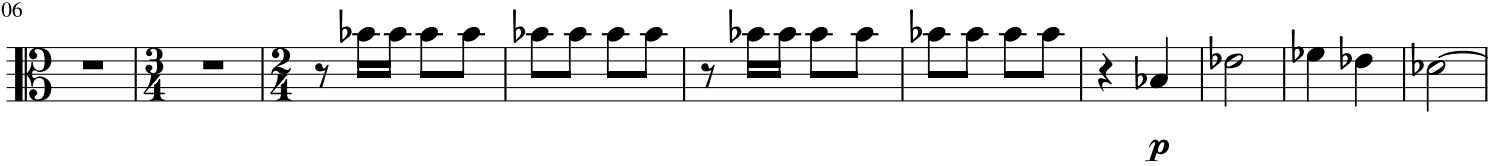
275



289



306



316

